



# PDX 2.0<sup>©</sup> Quickstart Guide

---

*Document Version 1.0.0*

Proudly Developed by



**Revision History**

Date	Document Version	Description	Author
20 June 2012	1.0.0	Initial Document	Graeme Allwood

**Contents**

PDX Quickstart Guide .....4

    Introduction.....4

    Architectural Overview.....4

Applications .....4

    PDX Transfer Application.....4

    PDX Collector Application.....4

Quickstart .....5

# PDX Quickstart Guide

## Introduction

The purpose of this document is to provide assistance in getting PDX Collector running with a sample configuration file.

## Architectural Overview

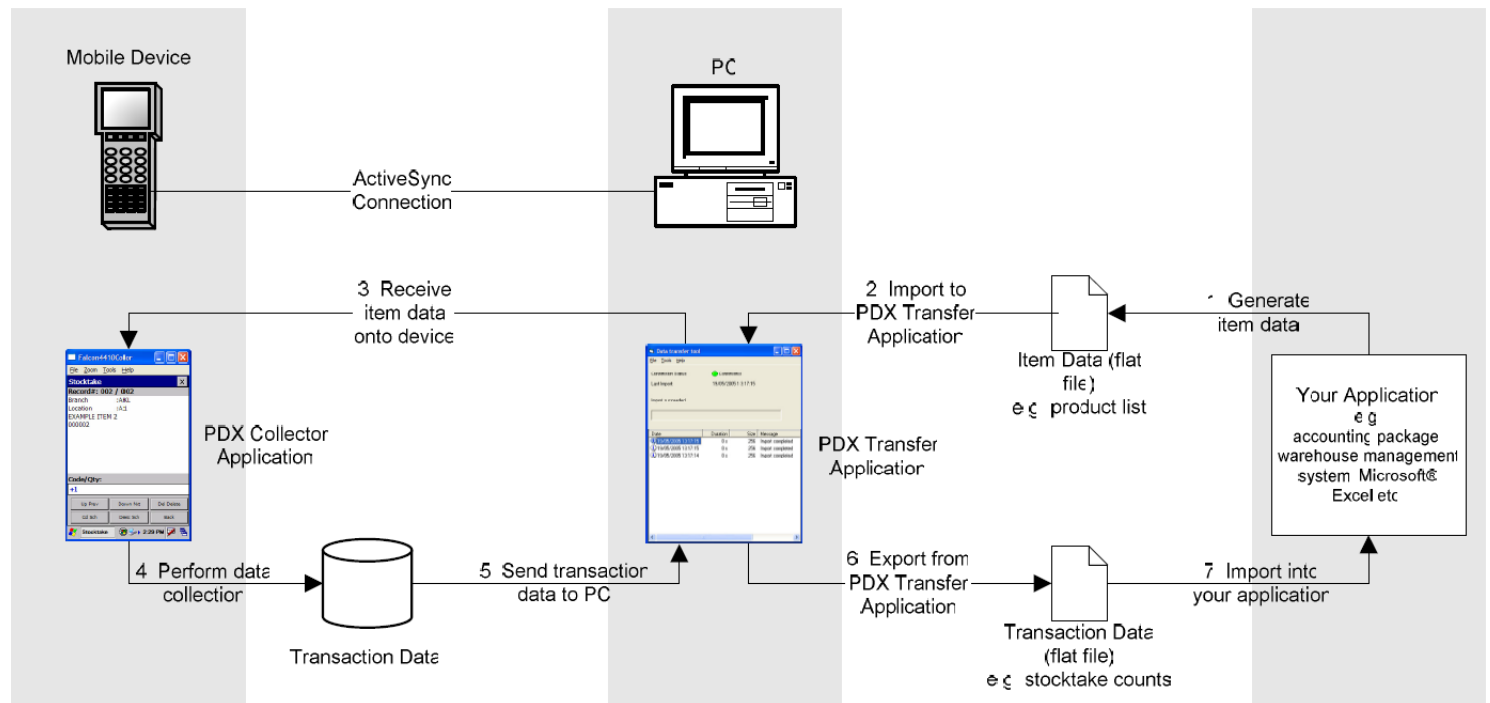


Figure 1-1

## Applications

### PDX Transfer Application

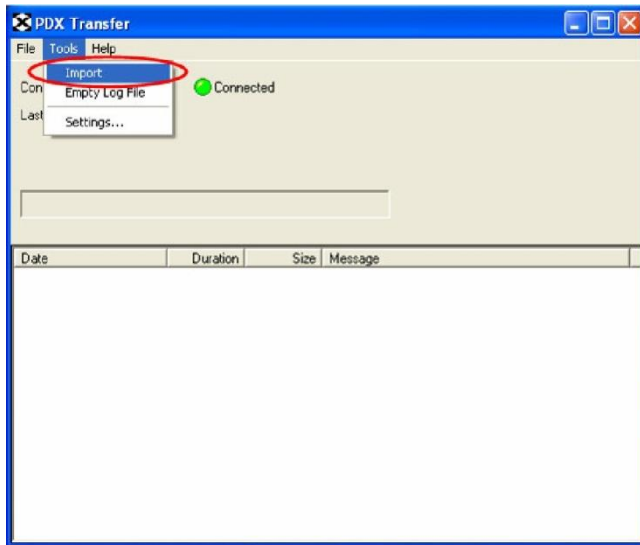
This application is used to manage the flow of data between the collection devices and your application. It can import and export data in any flat file format e.g. tab separated, comma separated etc.

### PDX Collector Application

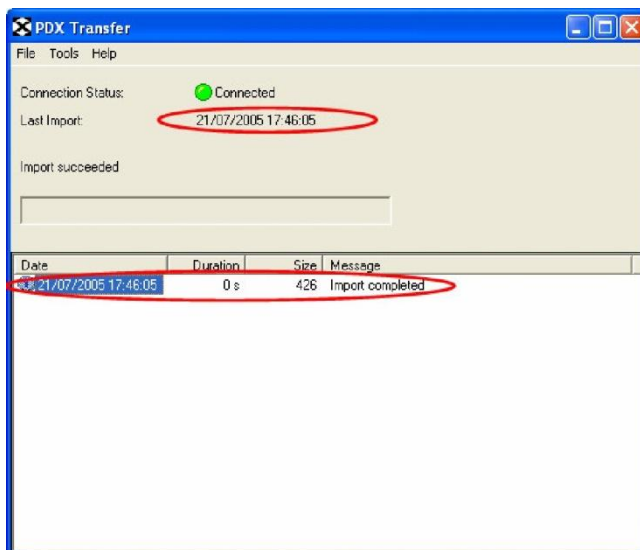
This application is used to perform the actual collection of data, scanning barcodes, entering of quantities etc. The fields to be captured, their required format and how errors are handled can be tailored to meet most requirements.

## Quickstart

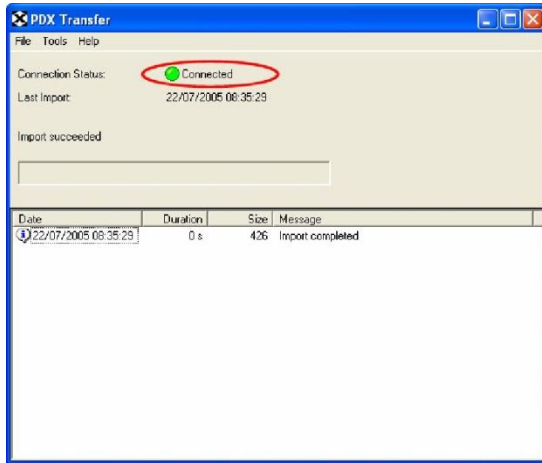
1. Open the PDX Transfer application.
2. Click Import... under tools menu. (This will import a pre-built configuration and use a pre-built product file).



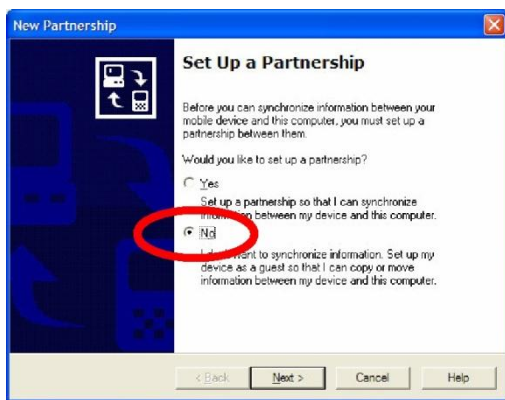
3. After clicking import PDX Transfer will display the following feedback to confirm the import was successful



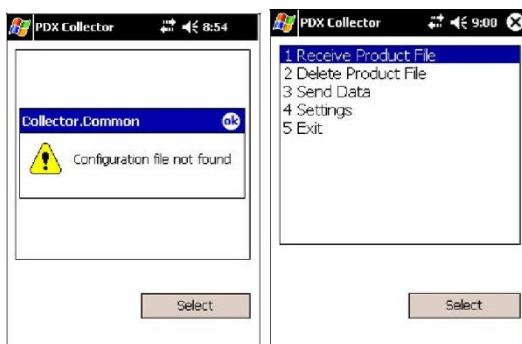
4. Ensure that your mobile device has an ActiveSync® connection to your PC. PDX Transfer will indicate this by showing the connection status as Connected



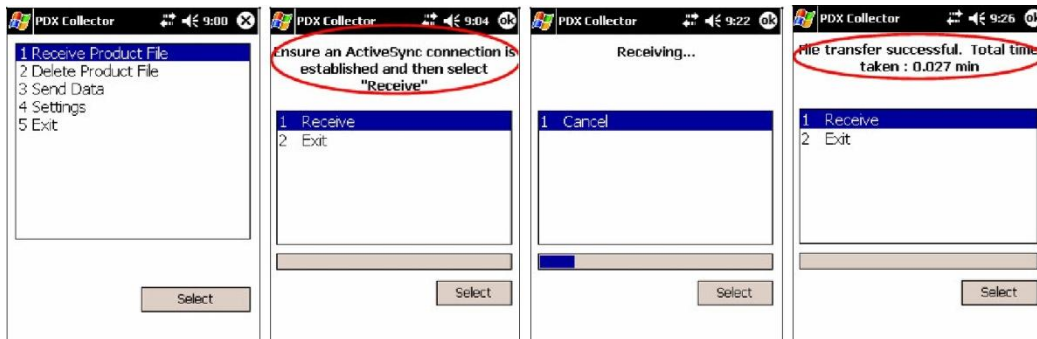
5. If you are prompted by ActiveSync® to create a new partnership with your PC, just select No and click Next.



6. Start the PDX Collector application on your mobile device. You may be prompted to enter an activation key, if you have been provided with one, enter it now, otherwise click Later to enter demo mode. You will be warned that no configuration file was found click Ok and the main menu will be displayed, the next step will resolve this condition



7. Select Receive Product File from the main menu and then select Receive. PDX Collector and PDX Transfer will display feedback to indicate that Receive has been successful. After a successfully receiving the product file you may disconnect your device if you wish



8. Please now refer to the appropriate transaction guide, e.g. 'PDX Stocktake Transaction Guide' to guide you through the Stocktake transaction which was received in the above step.