

# Portable Data XChange Mobile Computing For Business



*PDX - Portable Data Xchange – is a software tool that allows small to medium size businesses to implement their own Automated Data Capture solutions to suit their business requirements, resulting in increased stock accuracy, reduced errors and increased service levels, without costing the earth.*



*Flexible software options to suit your specific requirements:*

- Configurable field labels and prompts
- Configurable validation rules
- Customise flat file data formats for import and export into your accounting or inventory management software

*Ideal for*

**Automated Stock Take:** perform cycle counts or full stock takes, reduce down time and increase accuracy

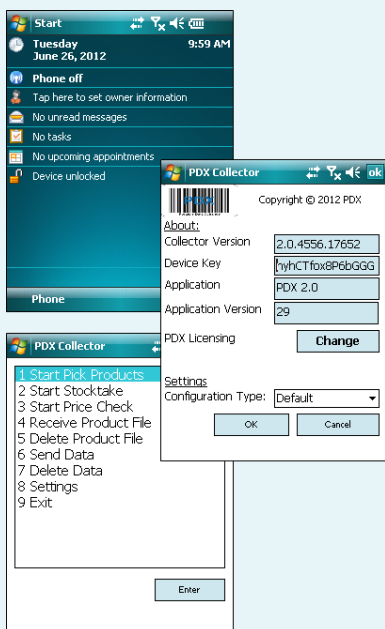
**Automated Order Take:** prioritise urgent orders, increase efficiency and accuracy

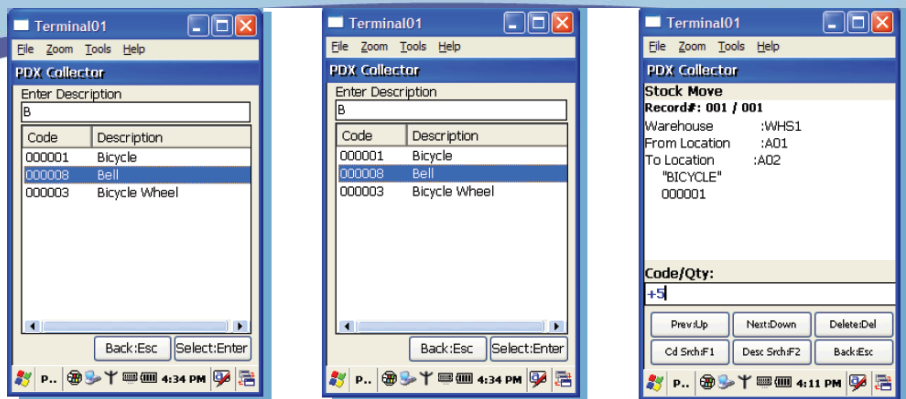
**Automated Stock Management:** speed up stock receiving, transfer and replenishment processes.

**Price Verification:** ensure prices on your shelf match those on your POS System

**Automate off-site processes:** take orders remotely, van sales or proof of delivery

**Asset Management and Tracking**





## How it Works

The host Product File is transferred to the PDT. This includes data such as Stockcode, Barcode, Description, Selling Price and Cost Price.

Record the appropriate transaction, selecting from the menu driven application. View, Search, Edit and Delete as required.

Transfer the data to your host PC by simply placing the PDT in the communications cradle and then press Send. It's that easy. PDX Transfer is the communications utility, using Microsoft ActiveSync or Windows Mobile Device Center, which transfers data between your host PC and the PDT.

- When doing a stock take, the product description and quantity counted so far, are all displayed, with multiple occurrences of the same product automatically accumulating on screen. Know what to count – singles or outer cartons - by the displayed "Unit of Measure" indicator on display. Perform a full or progressive search on an item by barcode and/or description.
- Count and verify stock by Location and/or Bin Number. Display theoretical stock quantities if required.
- Edit records by adding or deducting a code. If an item is scanned but is not in the product file, the software identifies the problem and marks for later attention, or saves as an exception.
- Receive or Return Stock into store by entering the Packing List Number or Purchase Order Number and scanning the codes and quantities.
- Sales Orders can be recorded including required delivery date, salesperson and account code.
- Transfer stock from one branch to another, including location within a warehouse as an option. For installations that use vans, transfer the stock from the warehouse to the van.

- The Sales module allows users to scan items and display the description and the unit price of the item. Items can be reviewed and changed. When finished, scan the account / transaction code and send the data to the host PC.

If your preferred accounting package has the ability to import and export data, you can now take advantage of PDX to perform all those portable tasks that you have ever asked about, but until now was just all too hard!

## PDX Improvements

There have been a number of improvements to PDX over the years including:

- Automatic upload of transaction files from your PDT to your Host PC upon docking your PDT into the communications cradle.
- Pick orders directly from the scanner, with full details of the customer, product code, description and expected quantity to pick displayed on the screen. Short picks, due to insufficient or damaged stock, are identified and returned to the host for action. Multiple picks can be handled at the same time, greatly increasing efficiency and accuracy while reducing the time to pick.

PDX is proudly developed and supported by



PDX allows multiple modules (transactions) to run on one Portable Data Terminal (PDT), such as:

Branch Transfers	Stock Take
Purchase Orders	Order Pick
Sales Order Entry	Receive Stock
Sales Delivery	Return Stock
Price Verification	Quotations
Asset Management	Asset Tracking

Configuration options provide the ability to record multiple Warehouses, Bin Locations, Salesperson Codes, Invoice Numbers, Order Numbers etc. If your installation does not require these functions - keep it simple - turn them off.

PDX is supported on PDT's running

